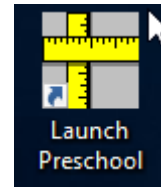


## Installation instructions

### Run the install

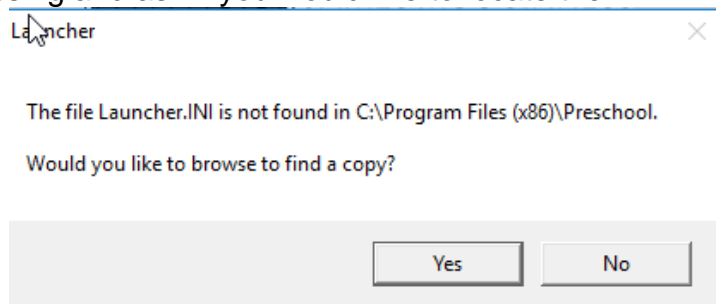
As an administrator on the workstation, install the client application on the workstation by using setup.exe or pschool.msi located in the network share Setup folder. Use the default options for all prompts. When completed, the application files will appear in the Preschool folder of the Windows program files folder.

There will be a new shortcut created on the Desktop to launch the application. The icon is two rulers.



### Run the application for the first time

Launch the application from the shortcut. A message should appear indicating that the configuration files are missing and ask if you would like to locate them.



Select "Yes" to browse to find the copy. Use the browse window to navigate to the master network share location ...\\Prod\\PRESCHOOL\_INI or ...\\Prod\\PRESCHOOL\_INI\_64 depending on whether you are running on a 32-bit or 64 bit machine. Select the Launcher.ini in the corresponding preschool ini folder and click "Open".

